



Webbs

Helping people move since 1994

Churchfields | Burton-on-trent | DE13 8PU

Offers In The Region Of £450,000

 **Webbs**
estate agents

Summary

** SOUGHT AFTER LOCATION ** LINK DETACHED BUNGALOW ** FINISHED TO A HIGH STANDARD THROUGHOUT ** TWO BEDROOMS ** MODERN FITTED KITCHEN ** DINING ROOM ** TWO RECEPTION ROOMS ** CONSERVATORY ** DOUBLE GARAGE ** VIEWING ESSENTIAL **

WEBBS ESTATE AGENTS are pleased to market this well presented two-bedroom link-detached bungalow, occupying a highly desirable position within the sought-after village of Yoxall. Finished to an excellent standard throughout, this impressive home combines modern styling with practical living space, making it an ideal choice for a range of buyers.

Yoxall is a well-regarded South Staffordshire village, offering a peaceful semi-rural lifestyle while remaining conveniently placed for Burton-on-Trent, Lichfield and surrounding commuter routes. The village itself benefits from a strong community feel along with local amenities, scenic countryside walks and good transport links, making it particularly appealing to those seeking a balance between village life and accessibility.

Key Features

- SOUGHT AFTER LOCATION
- FINISHED TO A HIGH STANDARD THROUGHOUT
- MODERN FITTED KITCHEN
- DOUBLE GARAGE
- CONSERVATORY
- LINK DETACHED BUNGALOW
- TWO BEDROOMS
- BATHROOM
- TWO RECEPTION ROOMS
- VIEWING ESSENTIAL

Rooms and Dimensions

Hallway

Living Room

11'7" x 17'4" (3.54 x 5.30)

Dining Room

7'11" x 10'2" (2.43 x 3.10)

Conservatory

10'6" x 6'7" (3.21 x 2.03)

Kitchen

14'10" x 11'8" (4.54 x 3.56)

Utility Room

7'3" x 11'10" (2.22 x 3.61)

Storage Room

9'6" x 13'9" (2.90 x 4.20)

Garage

17'7" x 10'4" (5.36 x 3.16)

Bedroom 1

19'9" x 11'5" (6.03 x 3.49)

Bedroom 2

10'6" x 9'9" (3.21 x 2.99)

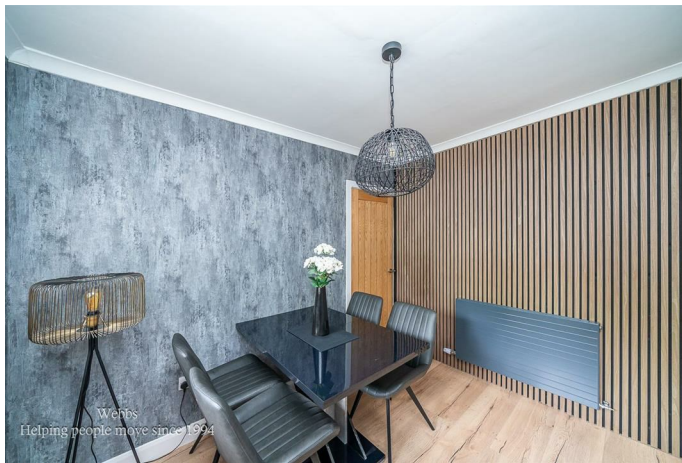
Bathroom

5'10" x 6'11" (1.80 x 2.11)

PREMIUM CONVEYANCING (C)

Agents Notes







Webbs Estate Agents - endeavour to maintain accurate depictions of properties in Virtual Tours, Floor Plans and descriptions, however, these are intended only as a guide and purchasers must satisfy themselves by personal inspection.

